



GAINES STREET

LOCUST ST

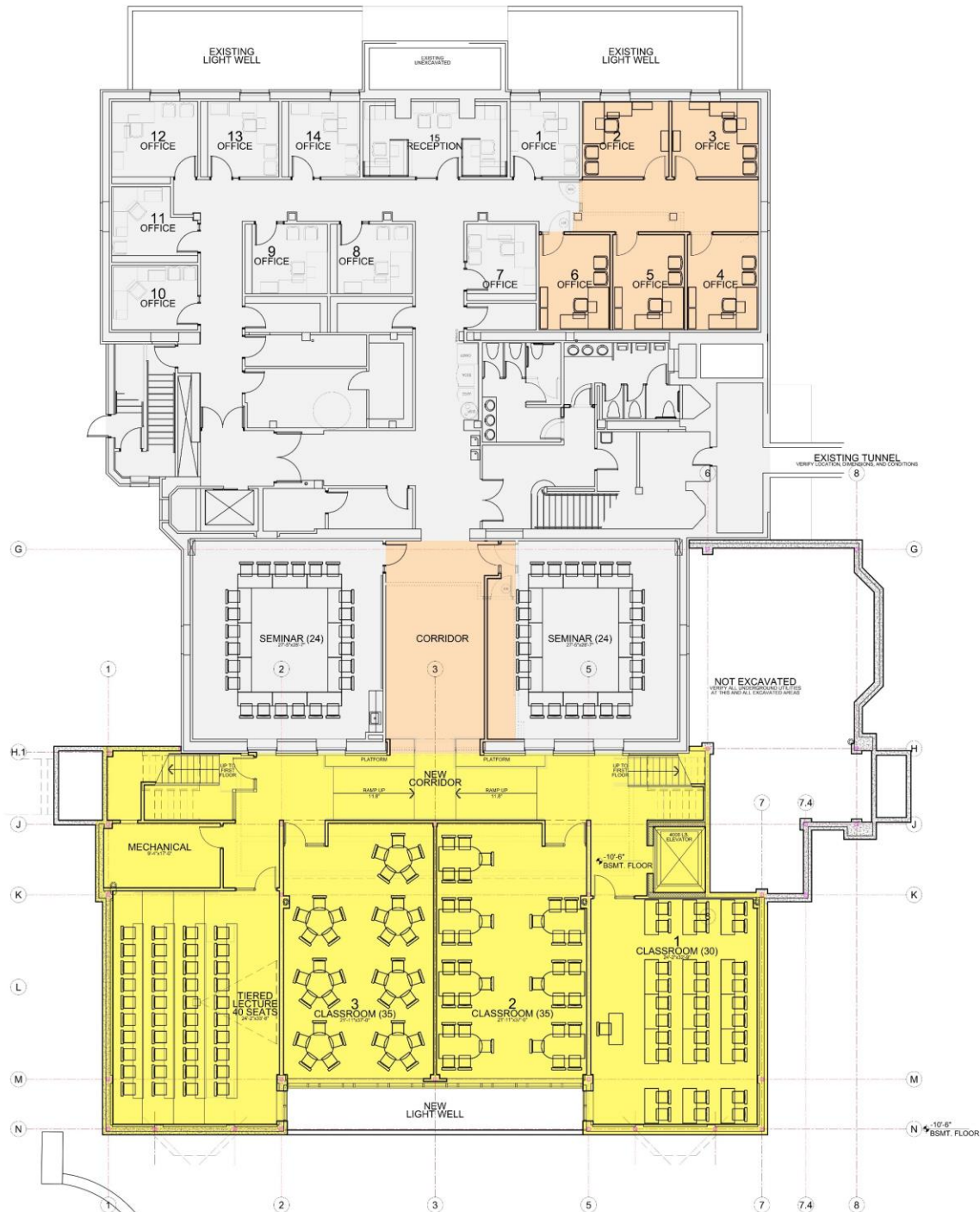
McMULLEN HALL  
EXISTING 24,127 SF

McMULLEN HALL  
NEW 15,950 SF

McMULLEN HALL  
PARKING LOT  
P13

AREA 27

B37



LOWER LEVEL FLOOR AREAS

REMODEL MAJOR	1,488 NSF
REMODEL MINOR	5,973 NSF
NEW ADDITION	4,839 GSF
<b>TOTAL</b>	<b>12,310 SF</b>

SUMMARY OF ALL FLOORS

REMODEL MAJOR	7,878 NSF
REMODEL MINOR	14,535 NSF
NEW ADDITION	14,657 GSF
LOBBY ADDITION	1,292 GSF
<b>TOTAL</b>	<b>38,362 SF</b>

NORTH  
**LOWER LEVEL OCCUPANCY PLAN**  
 SCALE: 1/8" = 1'-0"



EXISTING  
SIDEWALKS  
15'-0" WIDE  
14'-0" WIDE



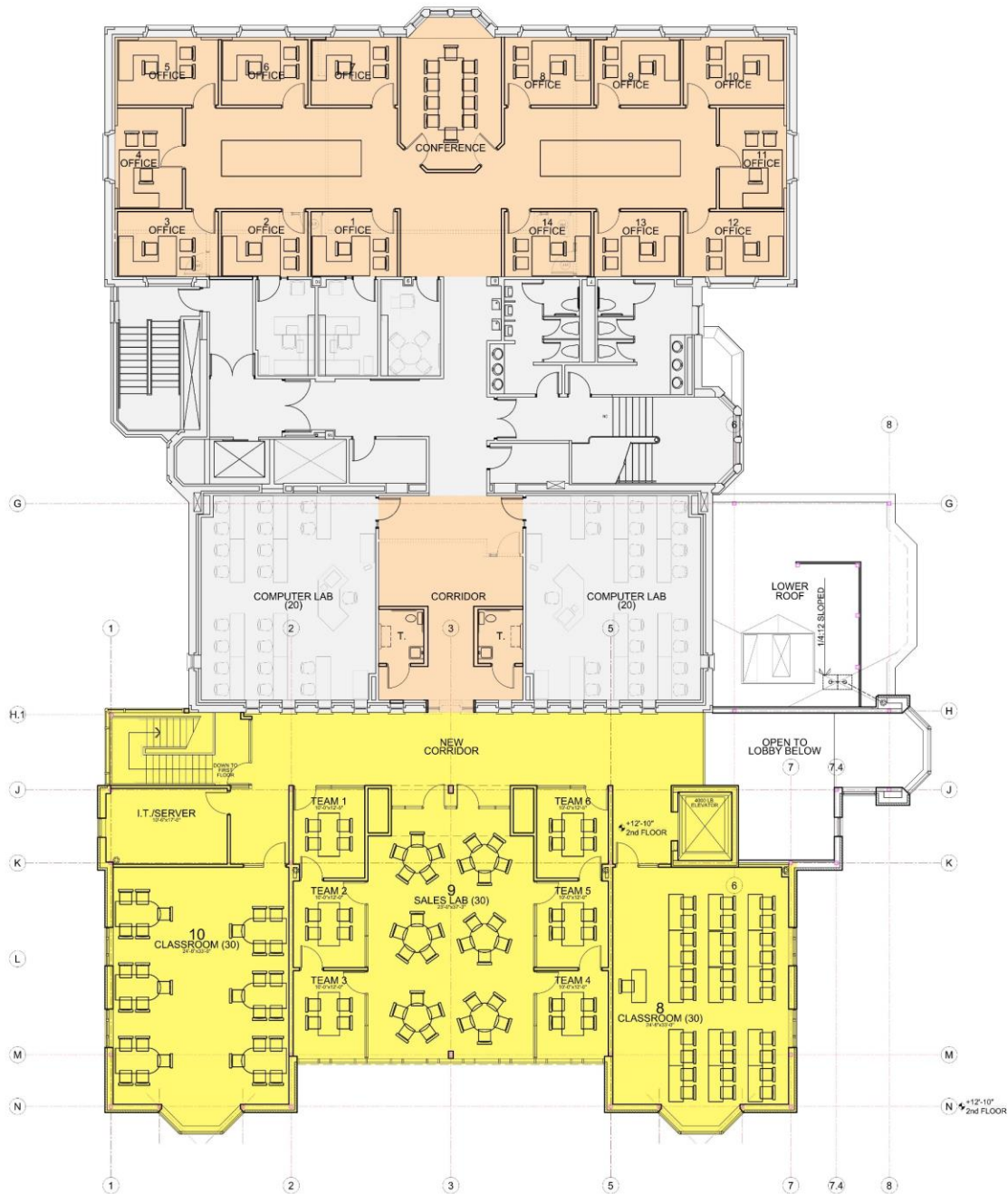
**FIRST FLOOR AREAS**

REMODEL MAJOR	2,662 NSF
REMODEL MINOR	4,789 NSF
NEW ADDITION	4,915 GSF
LOBBY ADDITION	1,292 GSF
<b>TOTAL</b>	<b>13,661 SF</b>

**SUMMARY OF ALL FLOORS**

REMODEL MAJOR	7,876 NSF
REMODEL MINOR	14,536 NSF
NEW ADDITION	14,657 GSF
LOBBY ADDITION	1,292 GSF
<b>TOTAL</b>	<b>38,362 SF</b>

NORTH  
**FIRST FLOOR OCCUPANCY PLAN**  
 SCALE: 1/8" = 1'-0"



**SECOND FLOOR AREAS**

REMODEL MAJOR	3,698 NSF
REMODEL MINOR	3,773 NSF
NEW ADDITION	4,900 GSF
<b>TOTAL</b>	<b>12,371 SF</b>

**SUMMARY OF ALL FLOORS**

REMODEL MAJOR	7,879 NSF
REMODEL MINOR	14,536 NSF
NEW ADDITION	14,657 GSF
LOBBY ADDITION	1,292 GSF
<b>TOTAL</b>	<b>38,362 SF</b>

### Proposed Building Addition B47

Stormwater runoff from the McMullen Hall addition will be captured in the roof drains of the new addition and directed into the existing storm sewer along the east side of Gains street. Rather than restricting the runoff from the new addition, the runoff from an area of equal size in parking lot P13 will be captured and released per the City of Davenport stormwater ordinance. The parking lot runoff will be detained in an underground system below the subgrade and will be processed to remove at least 80% total suspended solids from the total runoff.





Locust Street

LEFT TURN  
YIELD  
ON GREEN

ST. AMBROSE UNIVERSITY

GENESIS

Bus stop shelter





Locust Street

ST. AMBROSE UNIVERSITY





McMULLEN  
HALL





McMULLEN  
HALL





MONTGOMERY  
HALL



