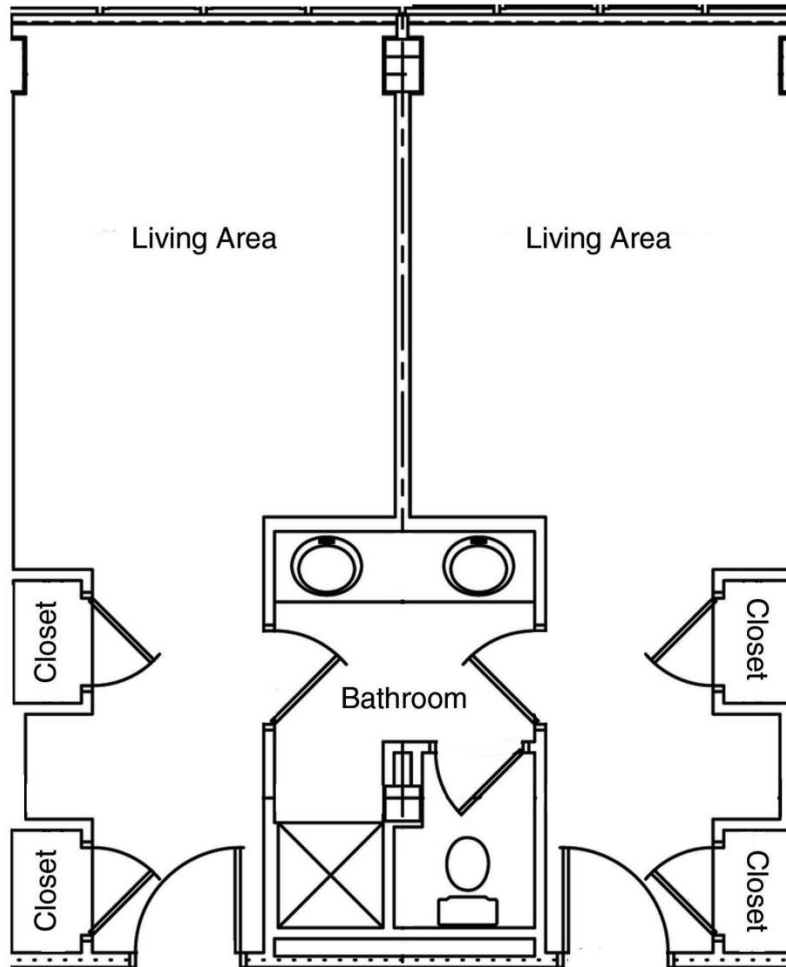


TYPICAL ROHLMAN HALL LAYOUT



DETAILS

- Double bedroom in four-person suite
- Bedroom dimensions: 11' W x 25' (at door) x 8' H
- Closet dimensions: 41" W x 24" deep, with 24" of storage space above closet
- Two beds (with loft and stacking options), dressers, desks with chairs, and closets
- Shared bathroom and shower in each suite
- Air-conditioning
- ADA accessible rooms
- Wireless and ethernet hookups
- Study and social lounges on each floor
- Laundry facilities on each floor