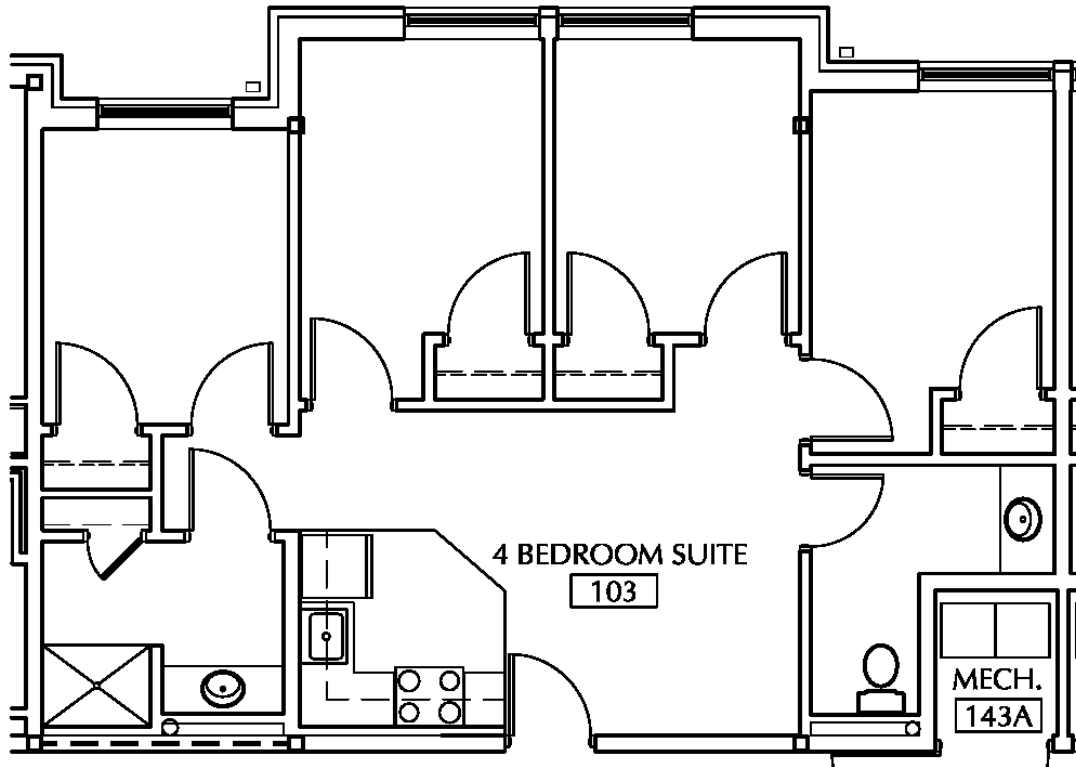


## NORTH HALL LAYOUTS

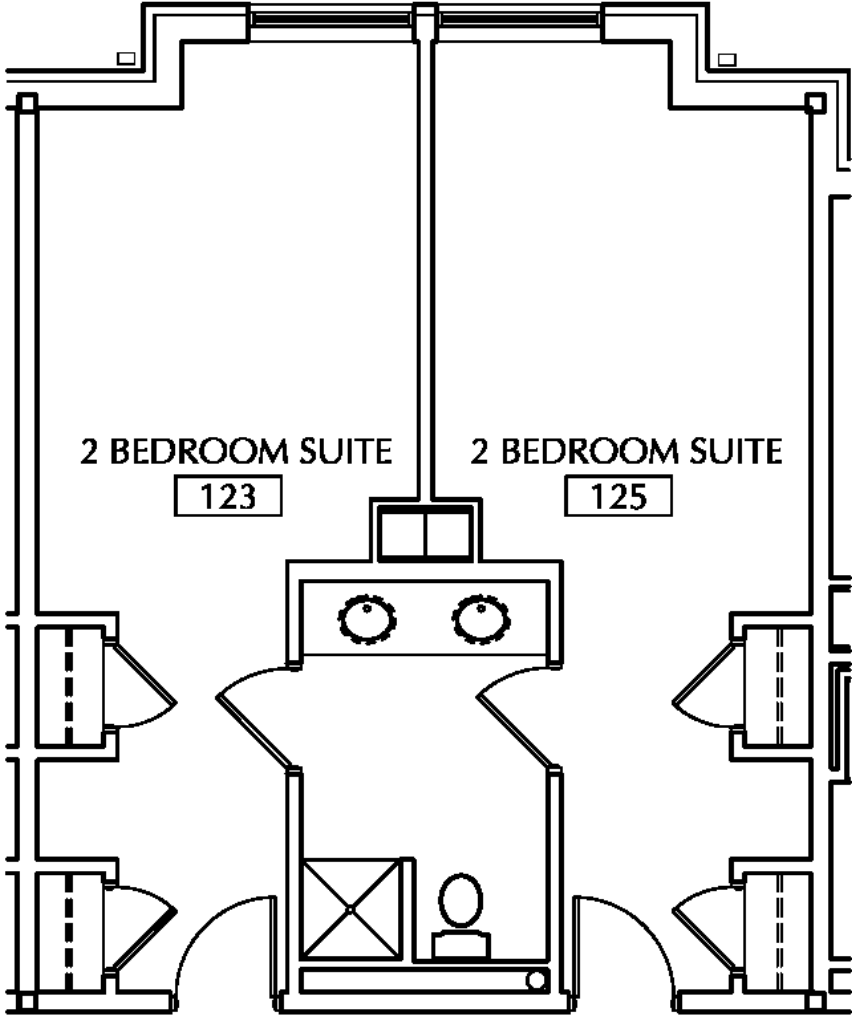
### NORTH HALL PREFERRED APARTMENT



### DETAILS

- Single bedroom in four-person suite
- Bedroom dimensions: 9' W x 11'
- Bed (with loft option), dresser, desk, and closet
- Bathroom(s) and shower in each apartment
- Living area includes three chairs and coffee table
- Kitchen includes dining table and three chairs, microwave, oven, stove and full-size refrigerator
- Carpeted floors
- Air-conditioning
- Wireless and ethernet hookups
- Community laundry facilities

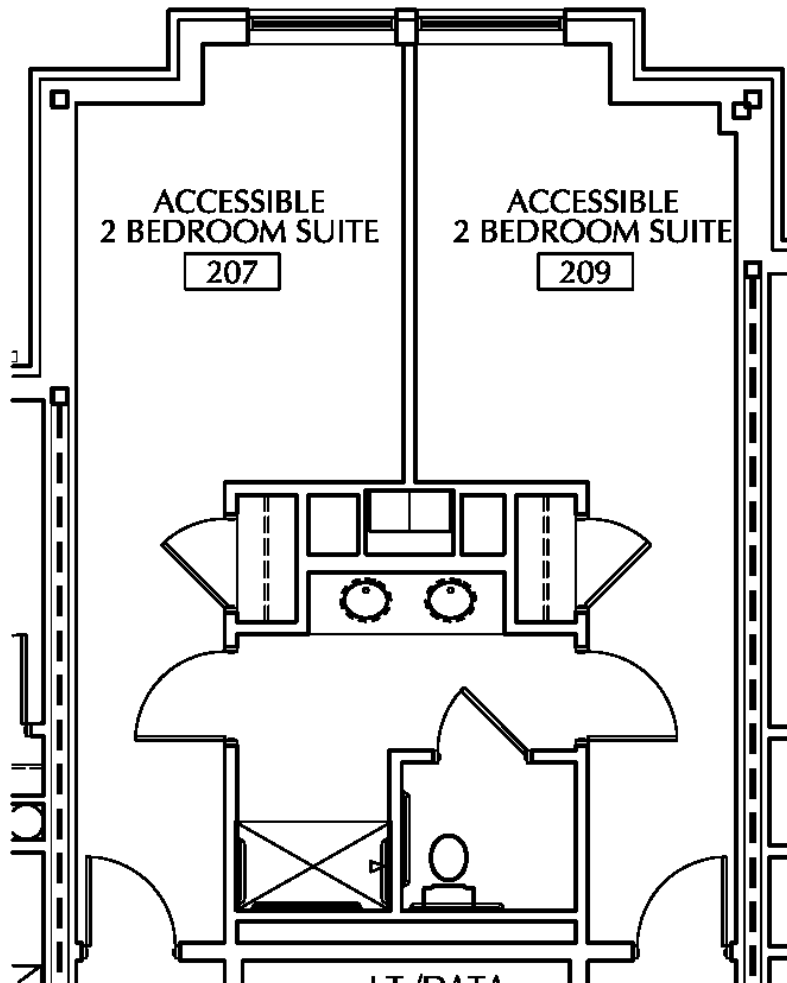
# NORTH HALL TRADITIONAL SUITE



## DETAILS

- Double bedroom in four-person suite
- Bedroom dimensions: 11' W x 16' with 6' x 13' entryway
- Two beds (with loft and stacking options), dressers, desks, and closets
- Shared bathroom and shower in each suite
- Carpeted floors
- Air-conditioning
- Wireless and ethernet hookups
- Community laundry facilities

## NORTH HALL ADA ACCESSIBLE SUITE



### DETAILS

- Double bedroom in four-person suite
- Two beds (with loft and stacking options), dressers, desks, and closets
- Shared bathroom and shower in each suite
- Carpeted floors
- ADA-Accessible
- Air-conditioning
- Wireless and ethernet hookups
- Community laundry facilities
- ADA rooms are designed for accessibility, and so the layout of an ADA room will vary from the typical suite layout